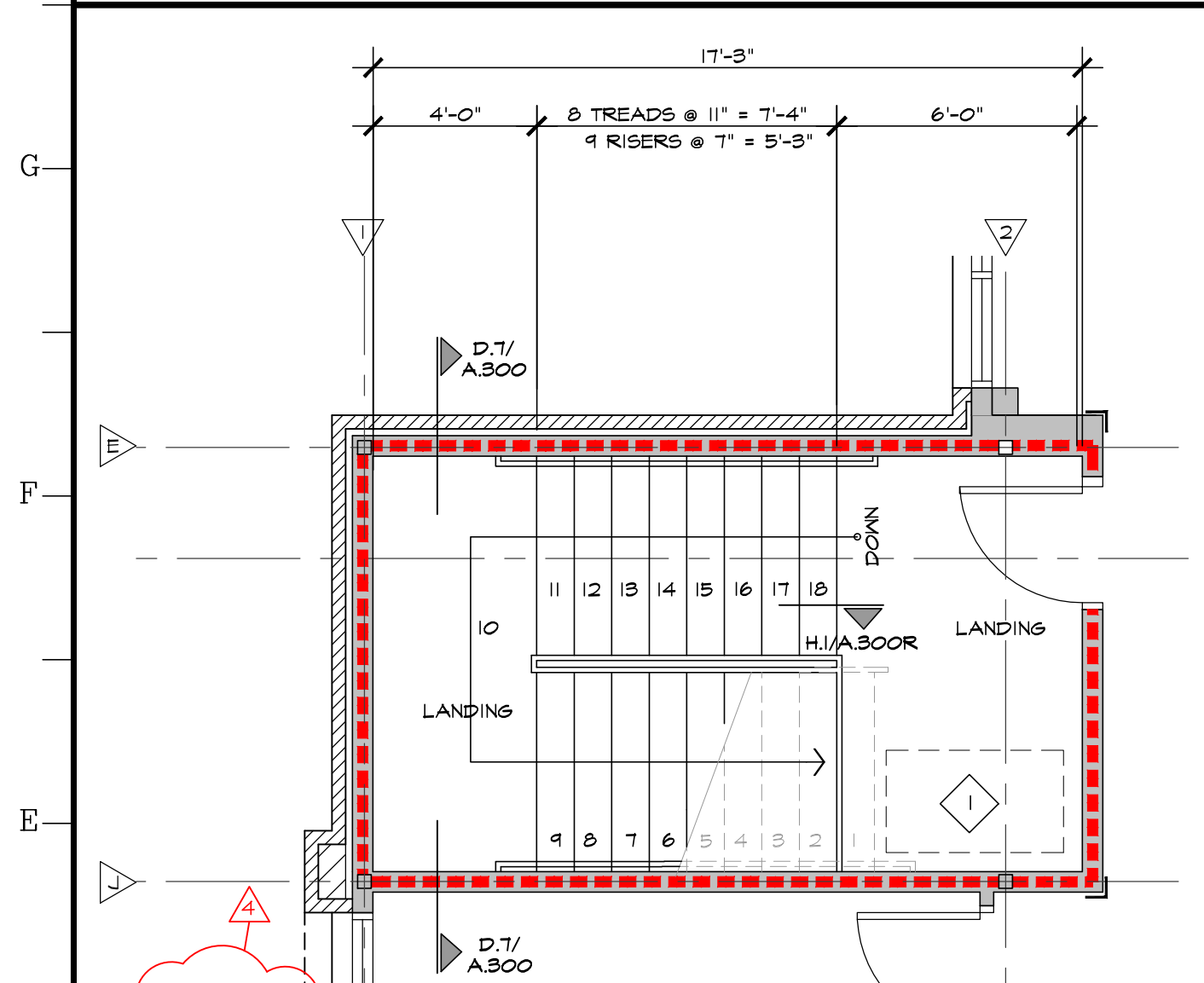
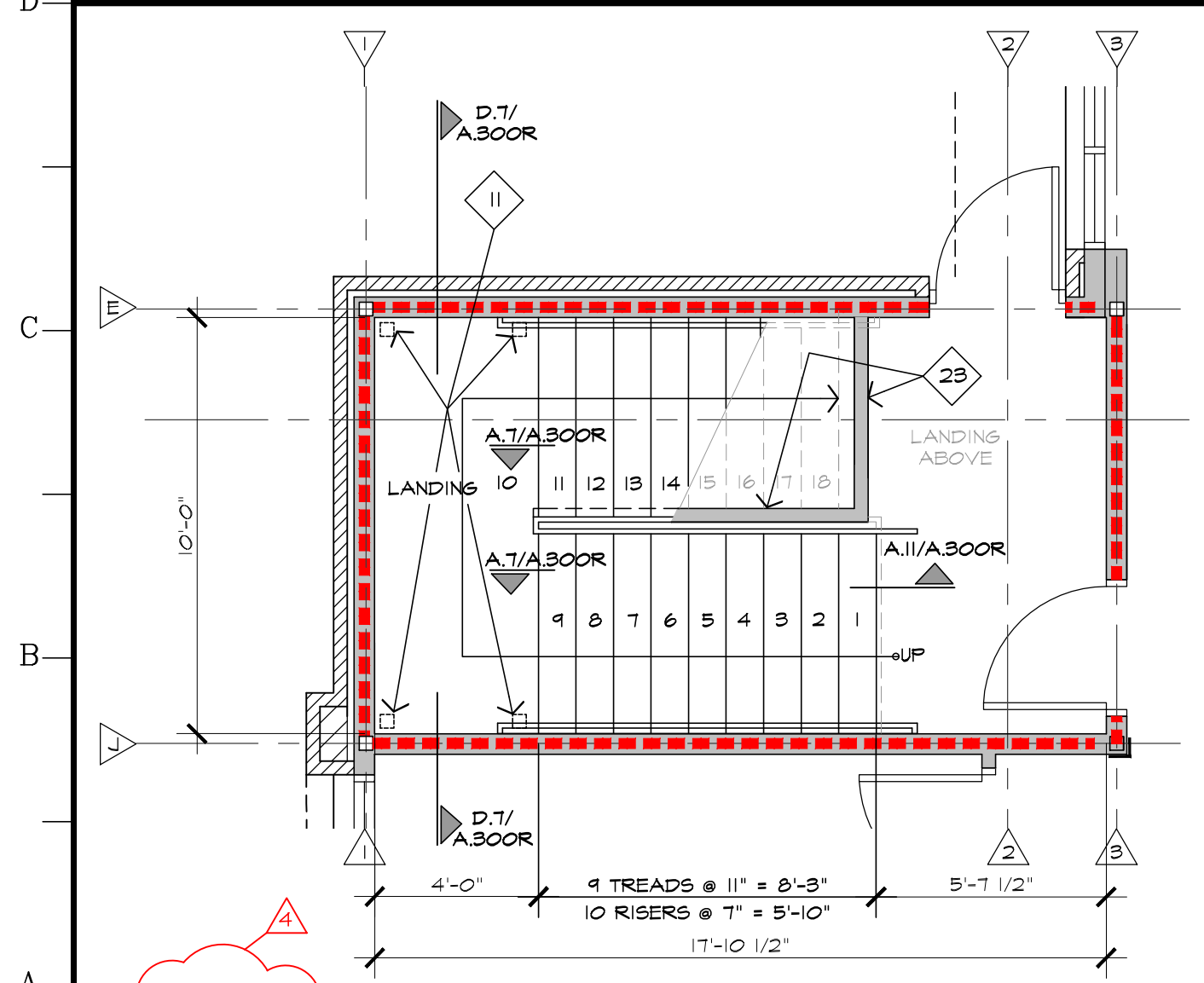


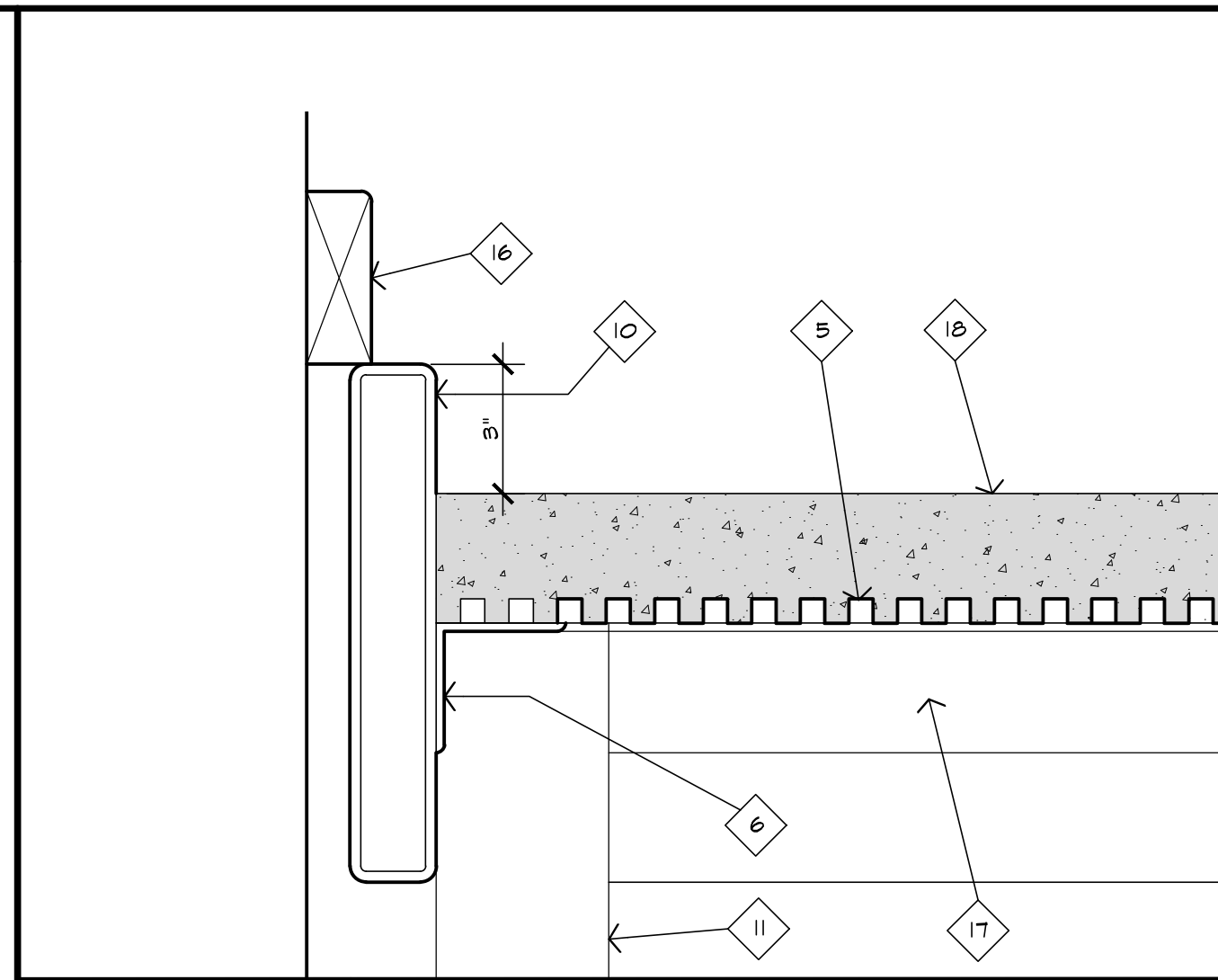
H.1 STAIR DETAIL SECOND FLOOR LANDING
SCALE: 3" = 1'-0" (IF PRINTED IN 24" x 36" FORMAT)



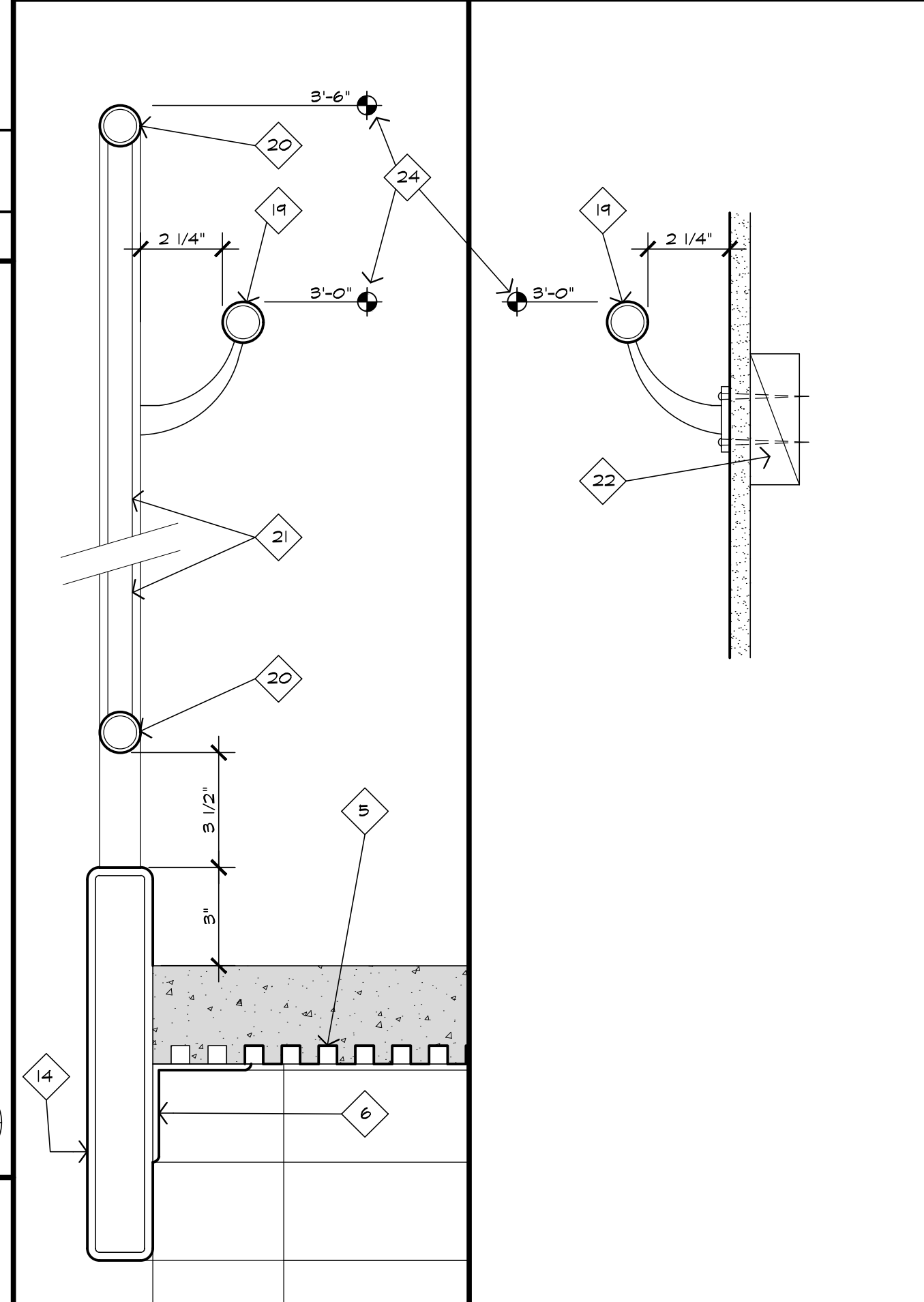
D.1 152 STAIR - 2nd FLOOR
SCALE: 1/4" = 1'-0" (IF PRINTED IN 24" x 36" FORMAT)



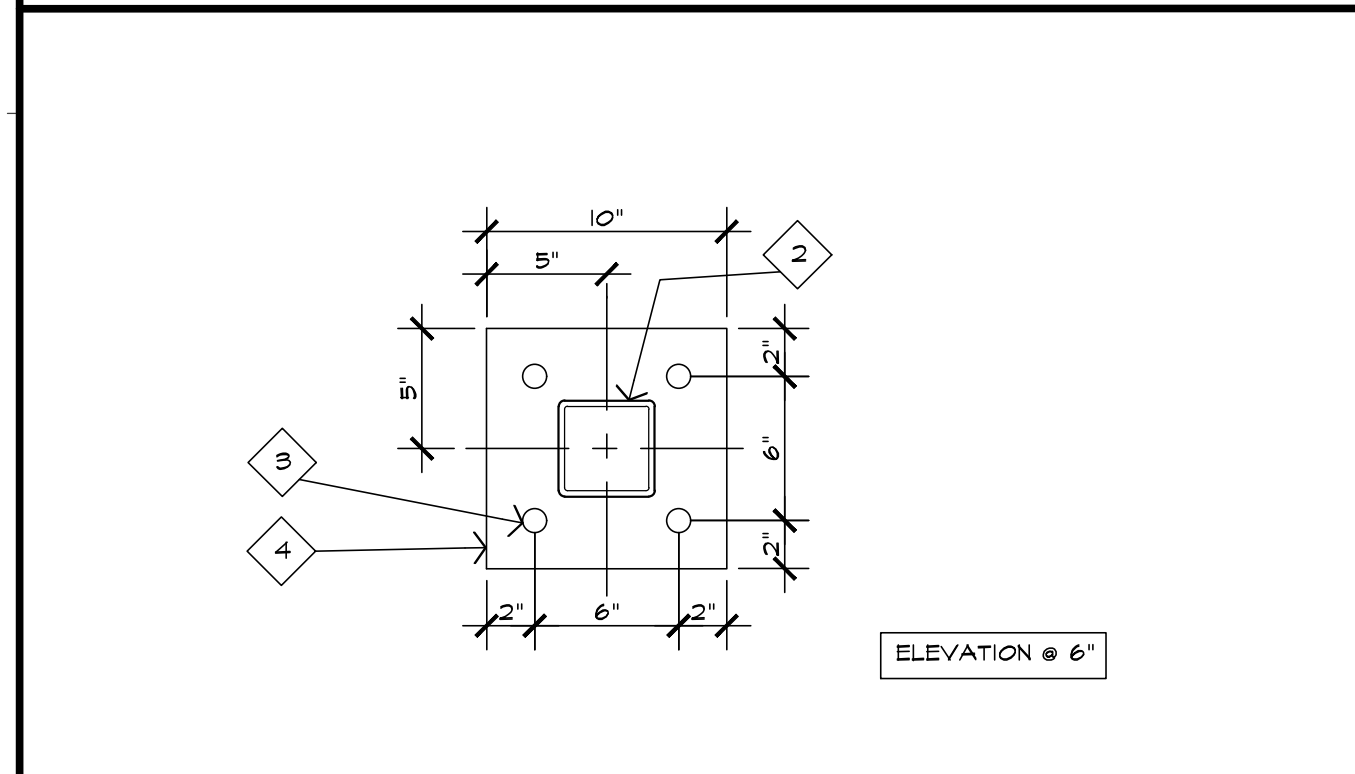
A.1 152 STAIR - 1st FLOOR
SCALE: 1/4" = 1'-0" (IF PRINTED IN 24" x 36" FORMAT)



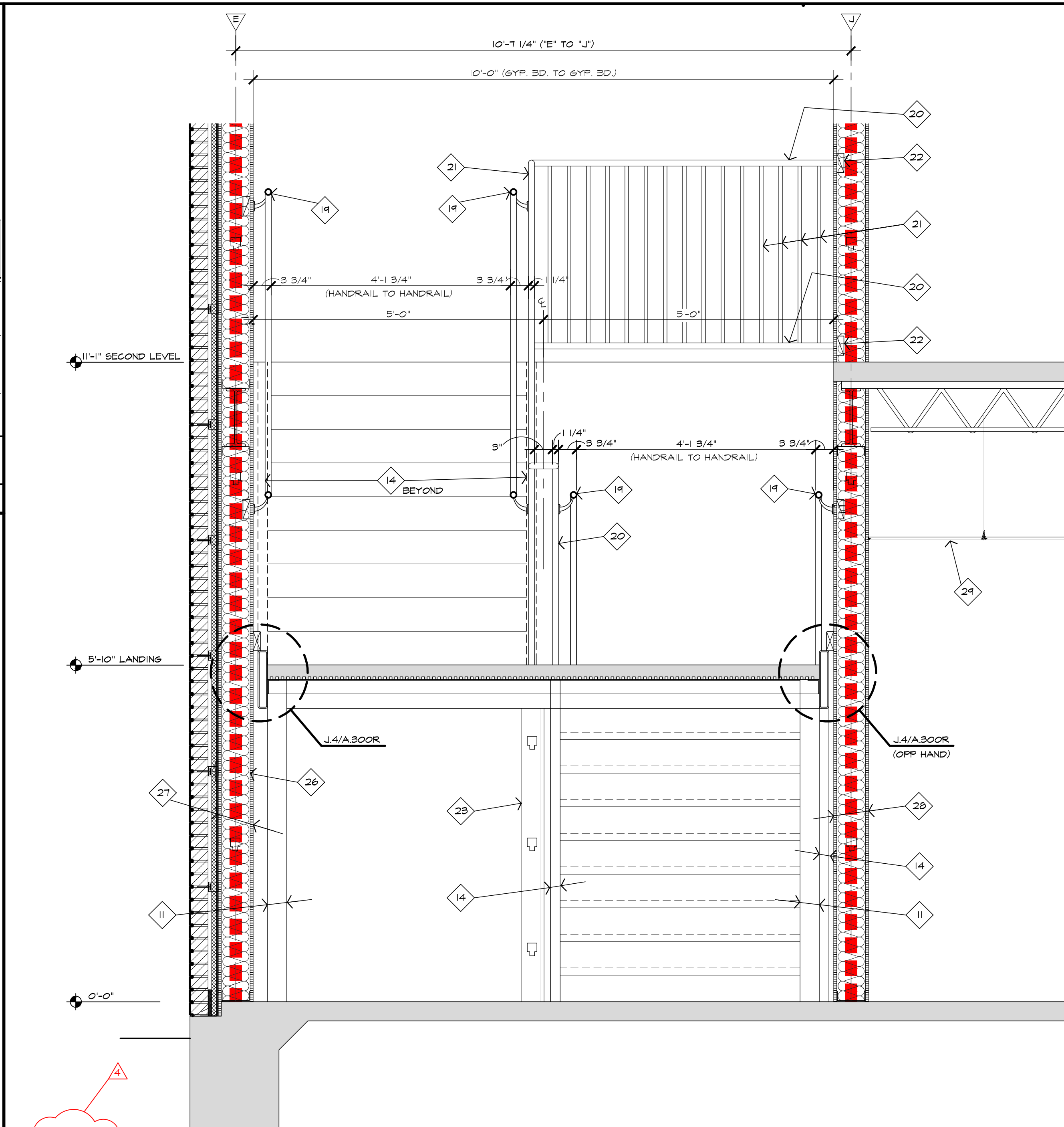
J.4 STAIR DETAIL
SCALE: 3" = 1'-0" (IF PRINTED IN 24" x 36" FORMAT)



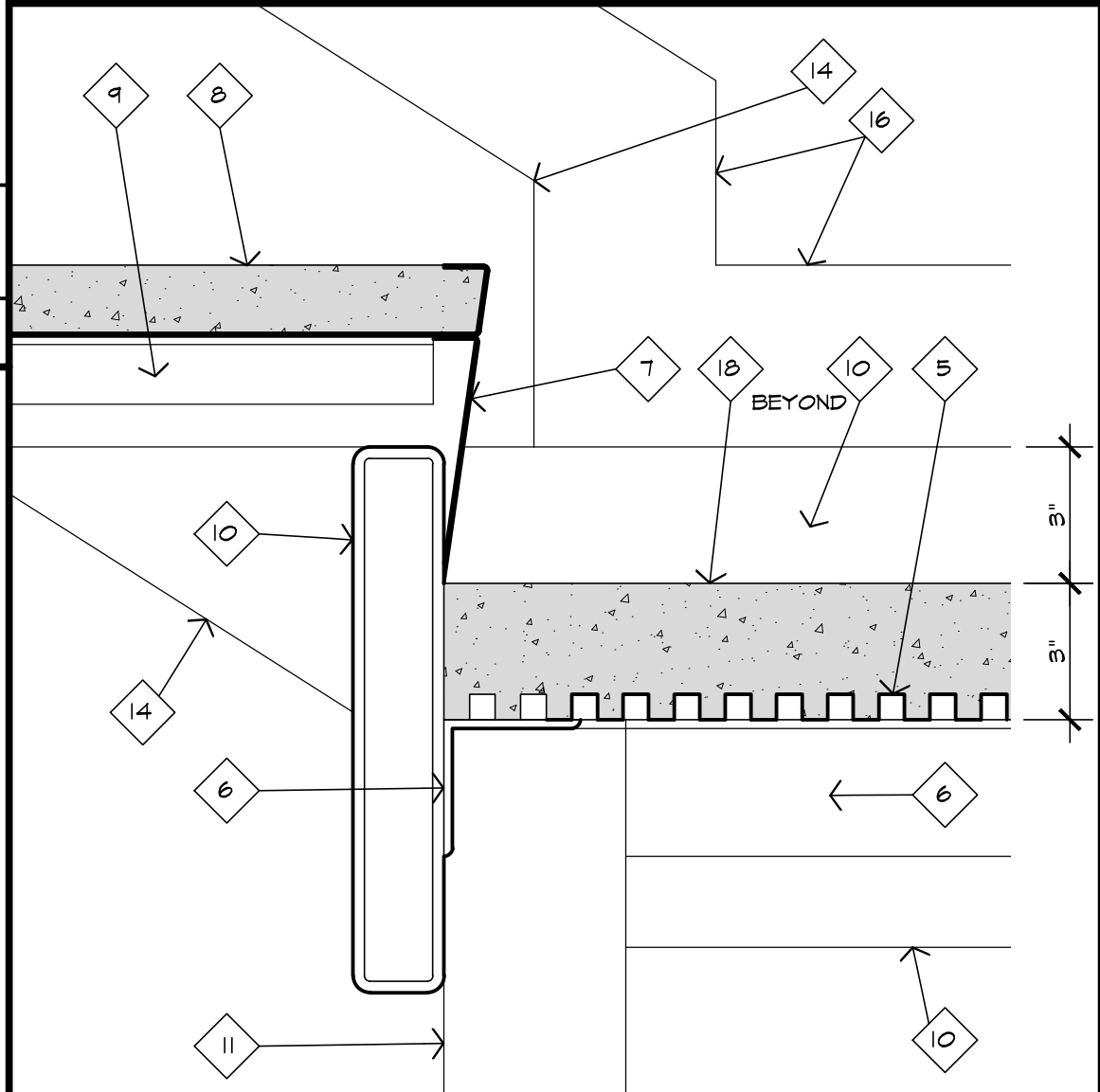
C.4 GUARDRAIL/HANDRAIL
SCALE: 3" = 1'-0" (IF PRINTED IN 24" x 36" FORMAT)



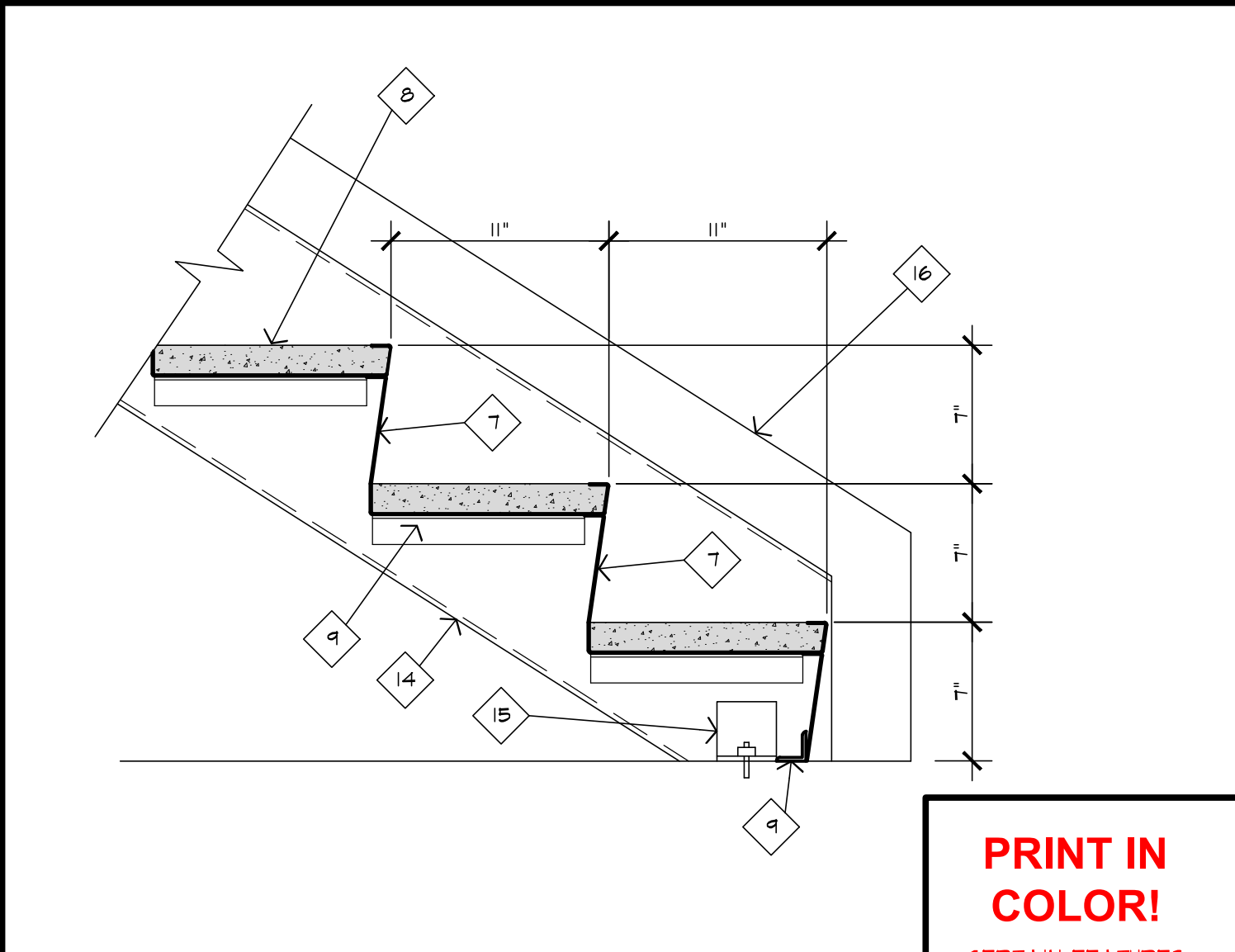
A.4 STAIR DETAIL
SCALE: 1 1/2" = 1'-0" (IF PRINTED IN 24" x 36" FORMAT)



D.7 SECTION @ STAIR
SCALE: 3/4" = 1'-0" (IF PRINTED IN 24" x 36" FORMAT)



A.7 STAIR DETAIL AT MID-LEVEL LANDING
SCALE: 3" = 1'-0" (IF PRINTED IN 24" x 36" FORMAT)



A.11 STAIR DETAIL AT FIRST FLOOR LANDING
SCALE: 1 1/2" = 1'-0" (IF PRINTED IN 24" x 36" FORMAT)

- KEYNOTES:**
- 1 AREA OF RESCUE. (30" x 52" MIN.)
 - 2 T.S. 4" x 4" x 1/4" COLUMN AND ANGLED SUPPORTS FULL WELDED TO BASE PLATE.
 - 3 1" DIAMETER HOLES.
 - 4 1/2" x 10" x 10" BASE PLATE. SECURE TO CONCRETE WITH (4) FOUR 3/4" x 12" ANCHOR BOLTS WITH 4" LEGS.
 - 5 9/16" GALVANIZED DECK.
 - 6 CONTINUOUS 3" x 3" x 1/4" STEEL ANGLE.
 - 7 16 GA. PLATE STEEL BENT AND WELDED TO PAN TREADS.
 - 8 CONCRETE FILLED METAL PAN TREAD WITH A LIGHT BROOM FINISH.
 - 9 1 1/2" x 1 1/2" x 3/16" ANGLE.
 - 10 T.S. 2" x 12" x 1/4" FRAME.
 - 11 T.S. 4" x 4" x 1/4" COLUMN AND ANGLED SUPPORTS BELOW LANDING.
 - 12 T.S. 2" x 12" x 1/4" FRAME.
 - 13 T.S. 4" x 10" x 1/4" FRAME.
 - 14 T.S. 2" x 12" x 1/4" STRINGER.
 - 15 3" x 3" x 1/4" STEEL CLIP ANGLE SECURED TO CONCRETE FLOOR SLAB.
 - 16 PAINTED 2 x 4 WALL TRIM WITH CURVED EDGE.
 - 17 1/4" x 3" x 3" STEEL ANGLES @ 16" O.C. - BOTH LANDINGS.
 - 18 CONCRETE WITH LIGHT BROOM FINISH.
 - 19 PAINTED 1 1/4" O.D. DIAMETER STEEL PIPE HANDRAIL WITH PAINTED WALL BRACKETS AT 48" O.C.
 - 20 PAINTED 1 1/4" O.D. DIAMETER STEEL PIPE GUARDRAIL TOP AND BOTTOM.
 - 21 PAINTED 3/4" STEEL BALUSTERS @ 4" O.C., WELDED TO TOP AND BOTTOM RAIL.
 - 22 2x BLOCKING.
 - 23 GYPSUM BOARD ON ONE SIDE OF METAL STUD WALL TO PROHIBIT ACCESS TO AREA UNDER STAIR. EXTEND WALL FROM FLOOR TO UNDER SIDE OF STRINGER ABOVE THE MID-LEVEL LANDING AND TO FURR DOWN ABOVE. SEE A1/A.250.
 - 24 ABOVE LANDING, FLOOR, OR STEPS.
 - 25 5/8" FIRE RATED GYPSUM BOARD.
 - 26 6" CFMF.
 - 27 ONE HOUR RATED EXTERIOR WALL (FROM SLAB TO UNDERSIDE OF ROOF DECK). FIRE CAULK ALL GAPS.
 - 28 ONE HOUR RATED INTERIOR WALL (FROM SLAB TO UNDERSIDE OF ROOF DECK). FIRE CAULK ALL GAPS.
 - 29 SUSPENDED ACOUSTICAL CEILING.

APPENDIX NO. 4		05.14.2026
NO.	REVISIONS/SUBMISSIONS	DATE

Lynn Guidry
ARCHITECT

411 ARCEAUX ROAD CARENCRO LOUISIANA 70520
337.896.6645 email: lynn@lynnguidryarchitect.com

CARENCRO CITY HALL EXPANSION 2026

210 EAST ST. PETER STREET CARENCRO, LOUISIANA

CITY OF CARENCRO

Drawing Title STAIR PLAN & DETAILS	
Designed LCG	Project No. 2024.006
Drawn BP	Scale AS NOTED
Checked LCG	Drawing No. A.300R
Reviewed LCG	Date MAY 14, 2026
43 OF 83	